

BYLAW NO. 16-2008

A BYLAW OF THE CITY OF LLOYDMINSTER  
IN THE PROVINCES OF SASKATCHEWAN  
AND ALBERTA TO AMEND A BYLAW TO ADOPT  
AN INTERMUNICIPAL DEVELOPMENT PLAN

---

The Council of the City of Lloydminster in the Province of Saskatchewan and Alberta enacts the following:

**WHEREAS** the Council of the City of Lloydminster deems it to be in the public interest to adopt the North Urban Expansion Area Structure Plan;

**NOW THEREFORE**, be it resolved that Council of the City of Lloydminster, duly assembled, hereby enacts as follows:

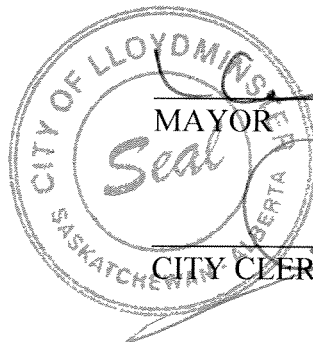
1. That the North Urban Expansion Area Structure Plan, being Schedule "A" attached to and forming part of the Bylaw, be adopted
2. Should any provision of this Bylaw be determined to be invalid, then such provisions shall be severed and the remaining Bylaw shall be maintained.
3. This Bylaw shall come into force and effect upon receiving third and final reading and having been signed by the Mayor and City Clerk.


This Bylaw shall come into force and effect upon the final passing thereof,

INTRODUCED AND READ a first time this 2<sup>nd</sup> day of September, 2008, A.D.

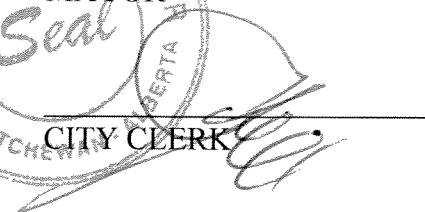
READ a second time this 6<sup>th</sup> day of October, 2008, A.D.

READ a third time this 6<sup>th</sup> day of October, 2008, A.D.

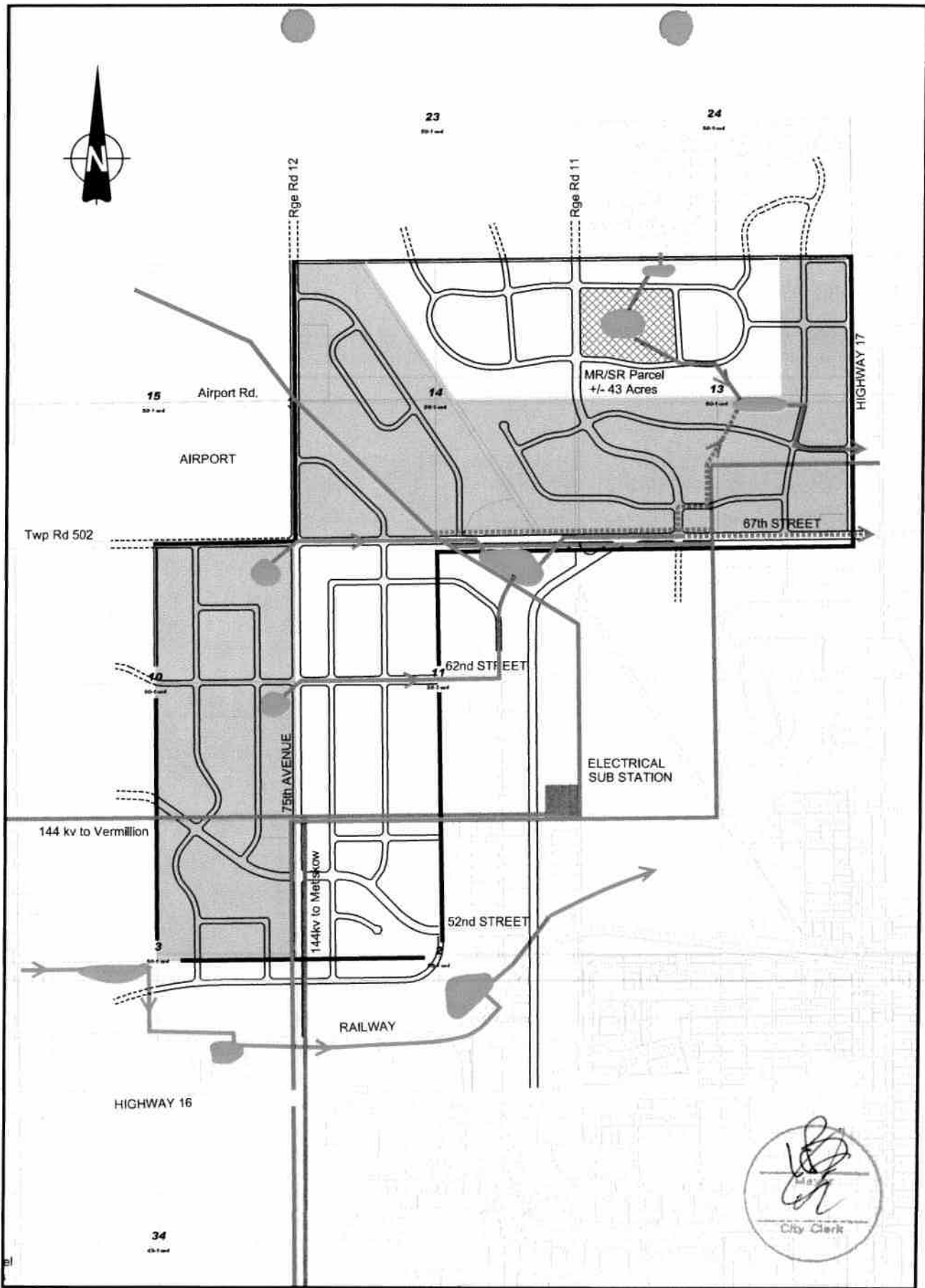
The seal is circular with the text "CITY OF LLOYDMINSTER" at the top, "SASKATCHEWAN" at the bottom left, and "ALBERTA" at the bottom right. The word "Seal" is written in the center in a stylized font.

A handwritten signature in black ink, appearing to be "C. Ball", written over a horizontal line.

MAYOR

A handwritten signature in black ink, appearing to be "J. [unclear]", written over a horizontal line.

CITY CLERK



<p>UE URBAN EXPANSION LIMITED COUNTRY RESIDENTIAL</p> <p>LE URBAN EXPANSION LIMITED NON-RESIDENTIAL</p>	<p><b>CONCEPTUAL URBAN LAYOUT</b> (Showing Major Planning Elements)</p>	<p><b>LEGEND</b></p> <ul style="list-style-type: none"> <li> STORM POND</li> <li> MAJOR PIPELINE RIGHT-OF-WAY</li> <li> OPTIONS FOR MAJOR PIPELINE EXPANSION/ RELOCATION</li> <li> AREA STRUCTURE PLAN BOUNDARY</li> <li> AREAS WITHIN WHICH MR/SR IS TO BE LOCATED IN THE APPROXIMATE AMOUNTS INDICATED</li> <li> STORM WATER SEWER</li> <li> STORM WATER CHANNEL</li> <li> DASHED LINE INDICATES OPTION IS UNDER REVIEW</li> </ul>
<p><i>Part of Bylaw 16-08.</i></p>		<p>DATE: 06/03</p>